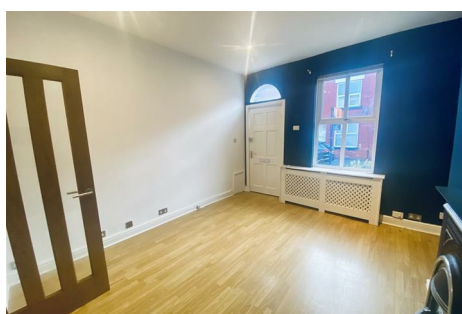


SALES - CONVENYANCING
LETTINGS - PROPERTY MANAGEMENT
PROPERTY SOURCING - MAINTENANCE
MORTGAGES



10 Helena Street , , M6 7RP

Murphy Waldron is pleased to present this charming three-bedroom mid-terrace Victorian house available for rent on Helena Street in Salford. Nestled in the desirable area known as Irlams O'Th Heights, or simply 'The Height', this property offers a perfect blend of comfort and convenience.

The house features a welcoming reception room, ideal for relaxation or entertaining guests. The two double bedrooms provide ample space for a working single, couple, or small family with a third bedroom/study to the ground floor. The property includes a modern bathroom and benefits from gas central heating, ensuring warmth and comfort throughout the year. The kitchen comes equipped with essential white goods, making it ready for immediate use.

Outside, you will find a quaint yard to the rear, perfect for enjoying the fresh air, along with street parking for your convenience. The location is particularly advantageous, with easy access to local amenities, the motorway network, and public transport links. Additionally, it is in close proximity to Salford University and the vibrant Manchester City Centre, making it an ideal spot for those who appreciate urban living.

£975 Per Month

10 Helena Street

, , M6 7RP



- Three bedrooms
- Double Glazed
- Gas Central Heating
- Street Parking
- Immaculate
- Available 1st September



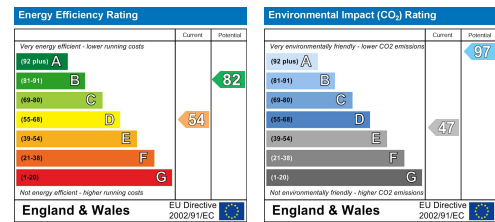
[Directions](#)



Tel: 0161 787 9195

Floor Plan

Floor Plan



These particulars, whilst believed to be accurate are set out as a general outline only for guidance and do not constitute any part of an offer or contract. Intending purchasers should not rely on them as statements of representation of fact, but must satisfy themselves by inspection or otherwise as to their accuracy. No person in this firms employment has the authority to make or give any representation or warranty in respect of the property.